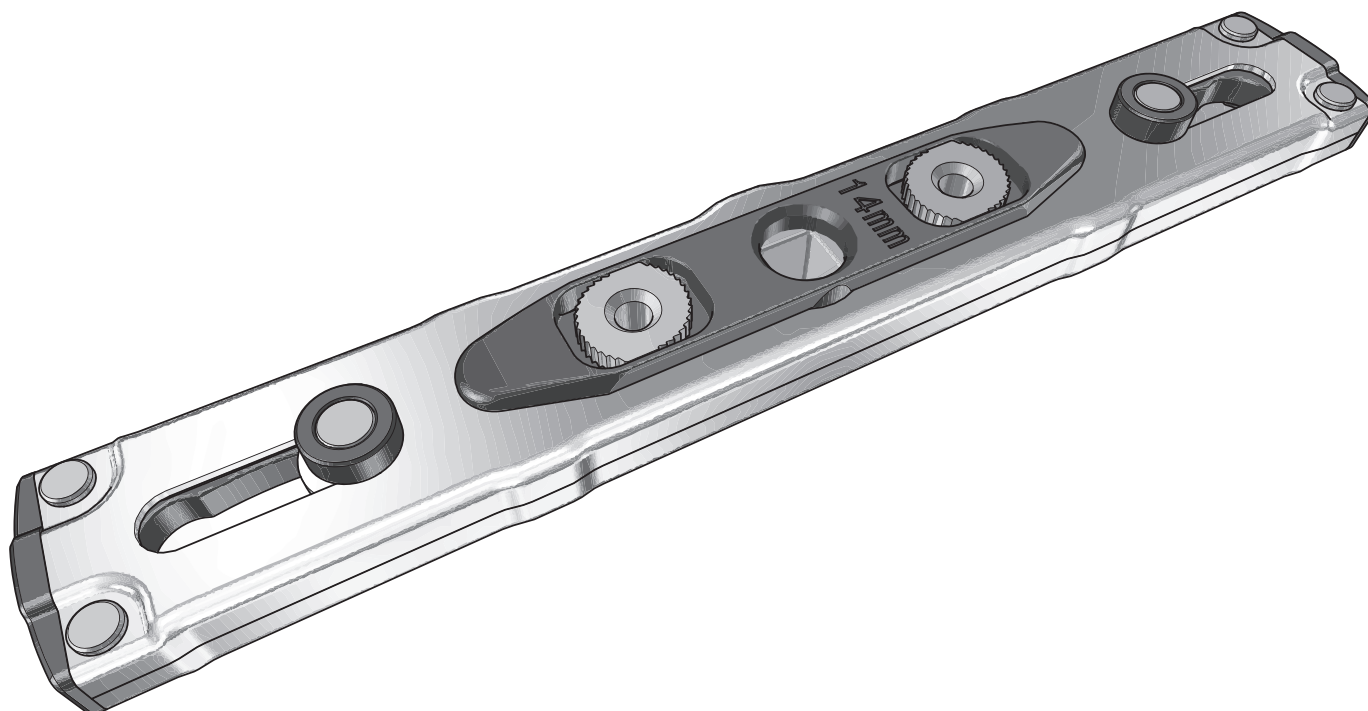


Sterling Window Lock

Product Overview



Sterling window lock is a bi-directional stainless steel gearbox for use on aluminium window systems requiring an internal cremone multi point locking system. Patented integrated eurogroove fitting system ensures screwless installation prior to handle fitting.

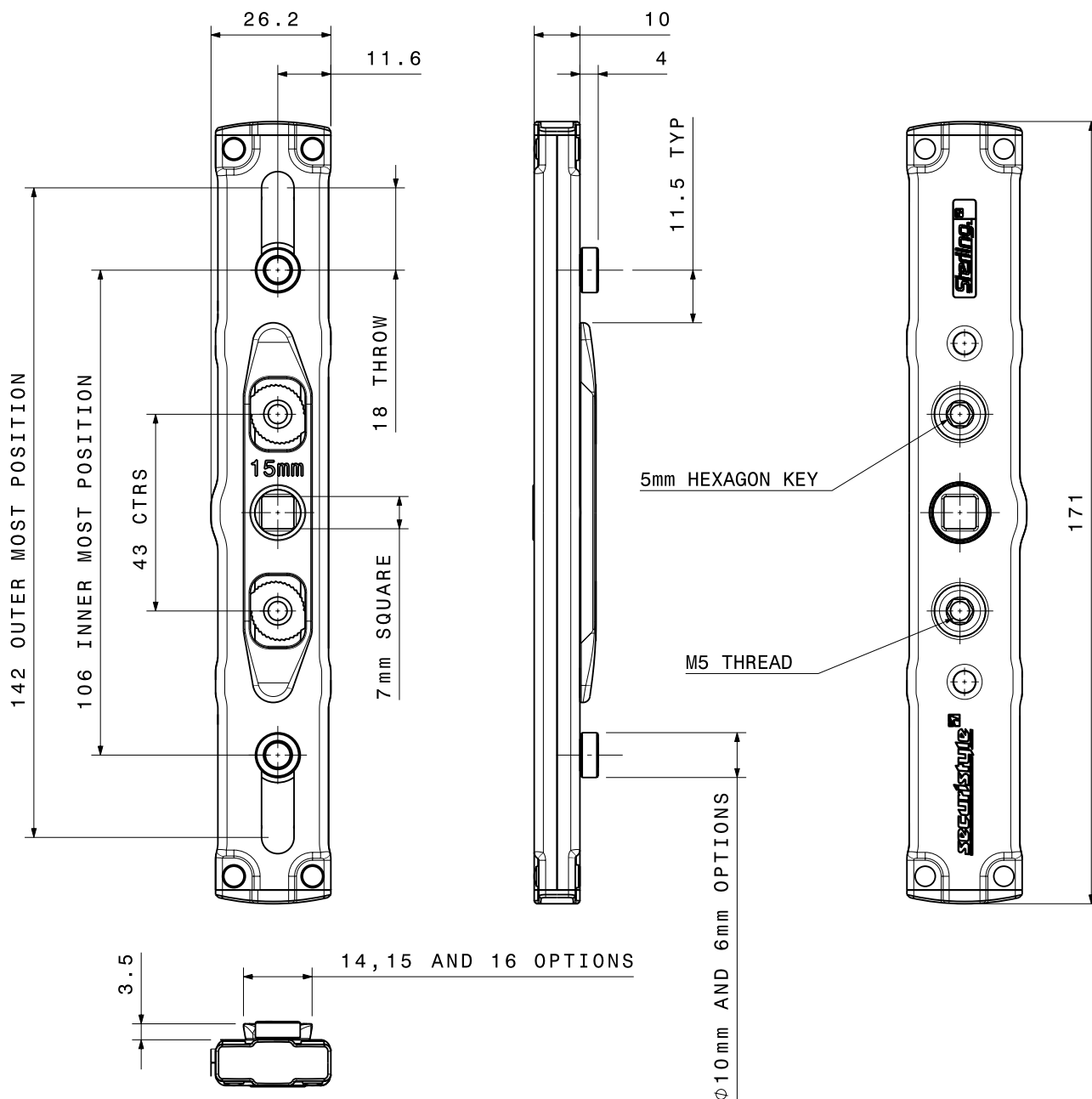
PRODUCT FEATURES

The product features of the Sterling Lock are;

- The quality of materials used - fully austenitic to compliment Sterling, Storm Balanced and Parallel Plus Hinges.
- Fastens to euro-groove using a 5mm Hex key without the need for separate fixing screws.
- Integrated euro-groove fitment system with 14mm, 15mm and 16mm options. Other variants can easily be introduced.
- A compact window lock allowing fitment to profiles with little or no routing.
- 18mm bi-directional throw. Available with 6mm and 10mm drive spigots.
- Polymer bushing on all pivot surfaces reducing operational friction and wear.
- Inherently strong design allows lock to be used on large vents with multiple locking points.
- No lubrication or maintenance required.
- Fully austenitic stainless steel construction meets 480hrs corrosion resistance class 5 of BS EN 1670.
- 12 year guarantee.

Sterling Window Lock

Product Features

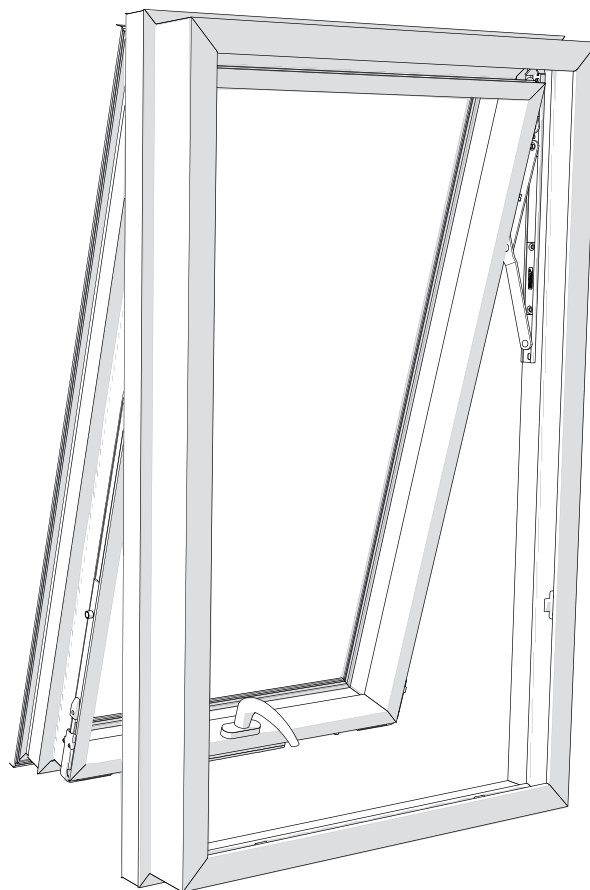
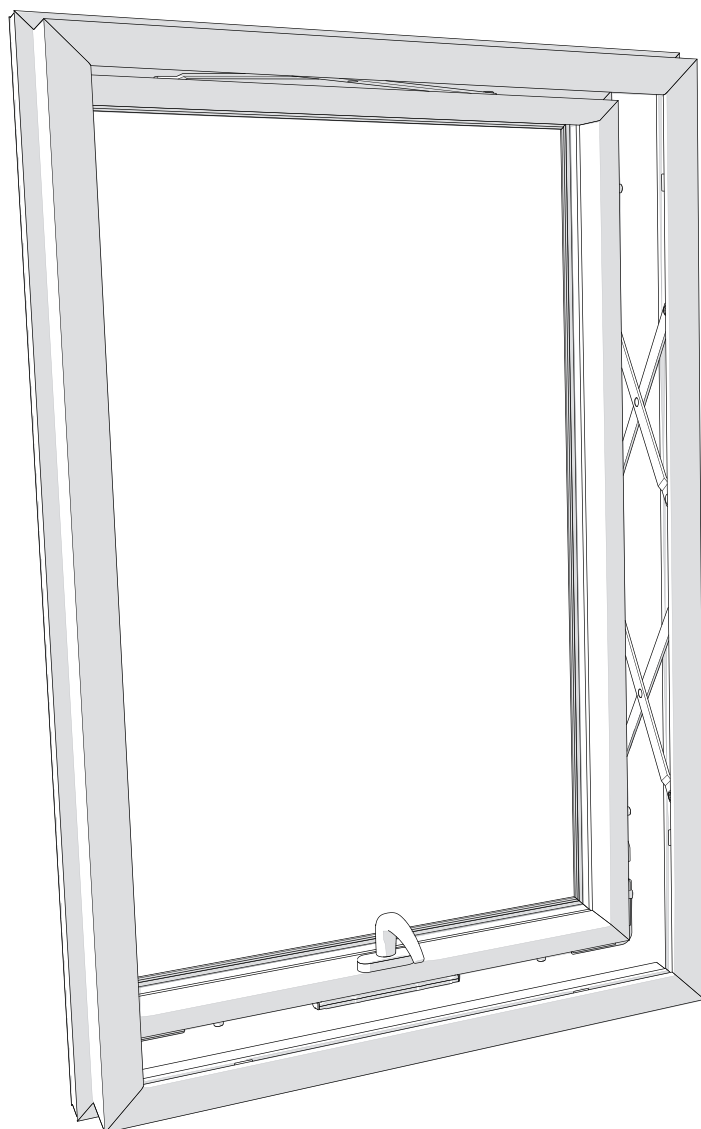


PART CODES AND VARIANTS

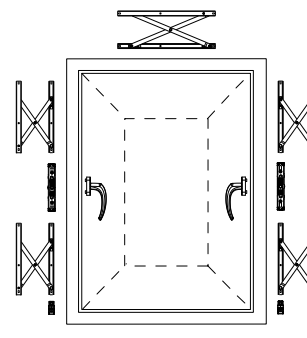
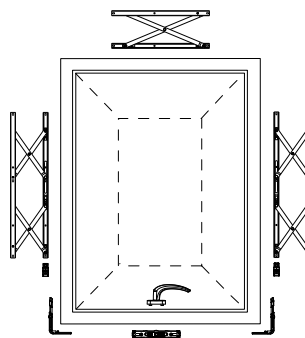
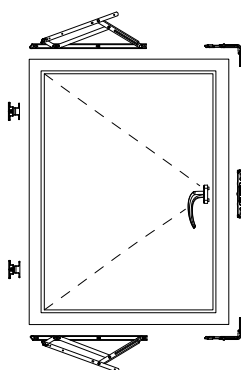
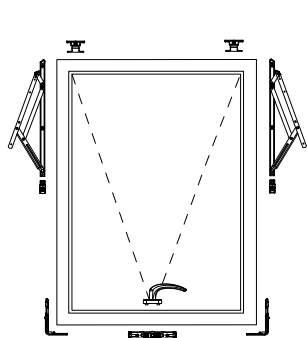
Part Code	Eurogroove Fitting System Width (mm)			Drive Spigot Diameter (mm)	
	14	15	16	6	10
SLT1406	•			•	
SLT1410	•				•
SLT1506		•		•	
SLT1510		•			•
SLT1606			•	•	
SLT1610			•		•

Sterling Window Lock

Installation Instructions



Sterling window lock can be used on all window systems with top mounted handle, as shown, that incorporate a euro-groove. Can be fitted to top hung, bottom hung, side hung and parallel opening configurations. Its compact design allows it to be fitted between two parallel hinges and therefore can be used on a dual handle window setup.

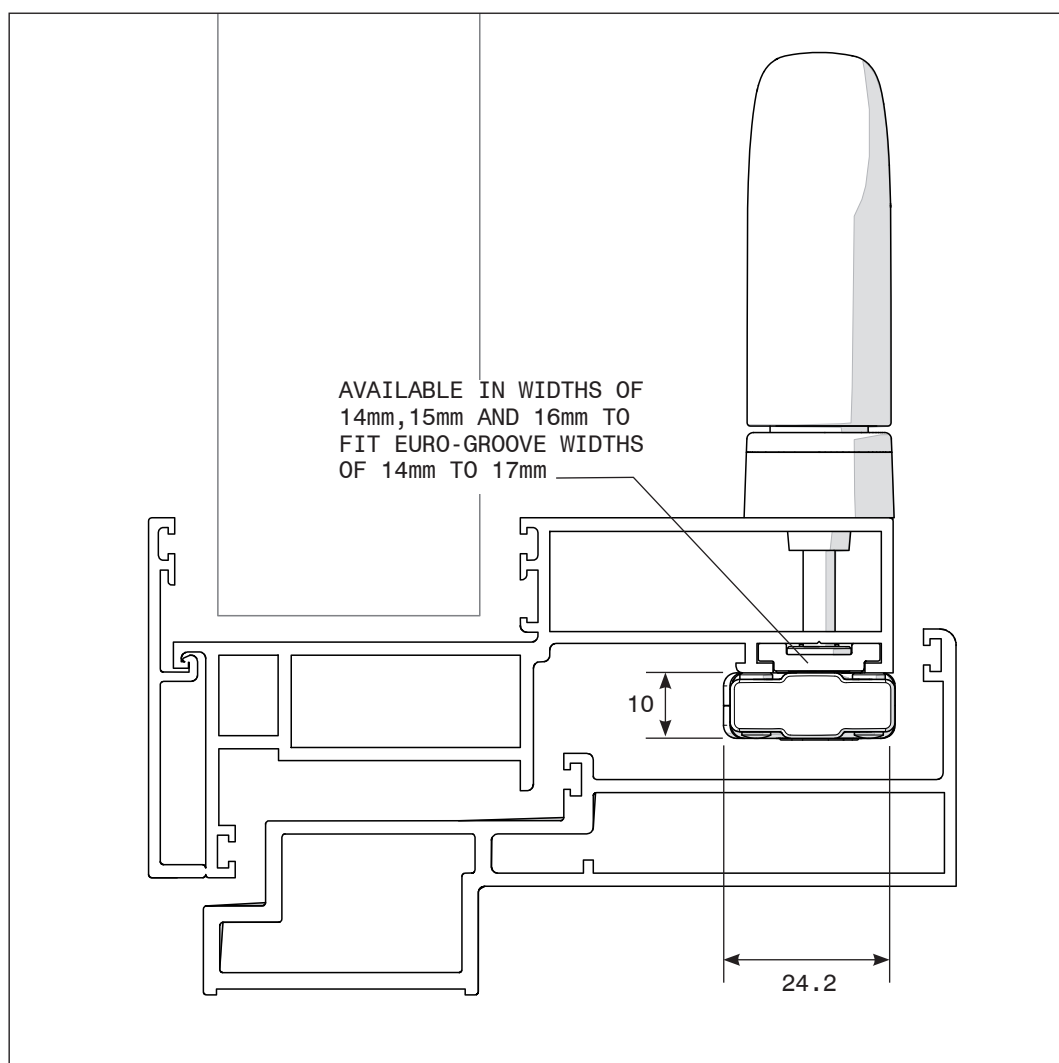
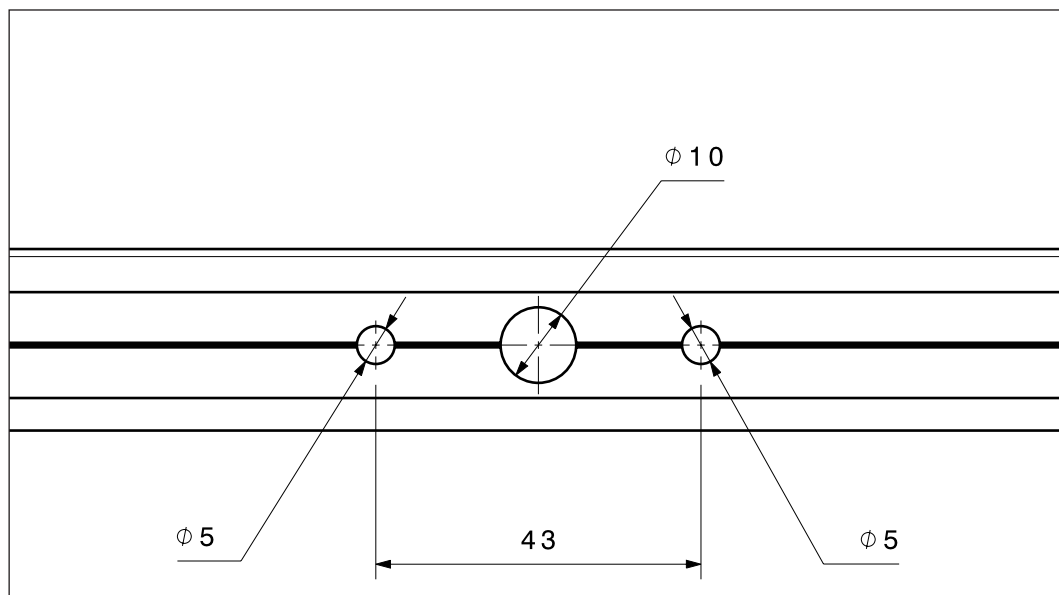


Sterling Window Lock

Installation Instructions

Profile preparation and clearances

Window profiles require minimal preparation as optional euro-groove cam locking packers eliminate the need for routing or machining in most cases. Handle fixing screw holes and a clearance hole for the square drive are the only features required.

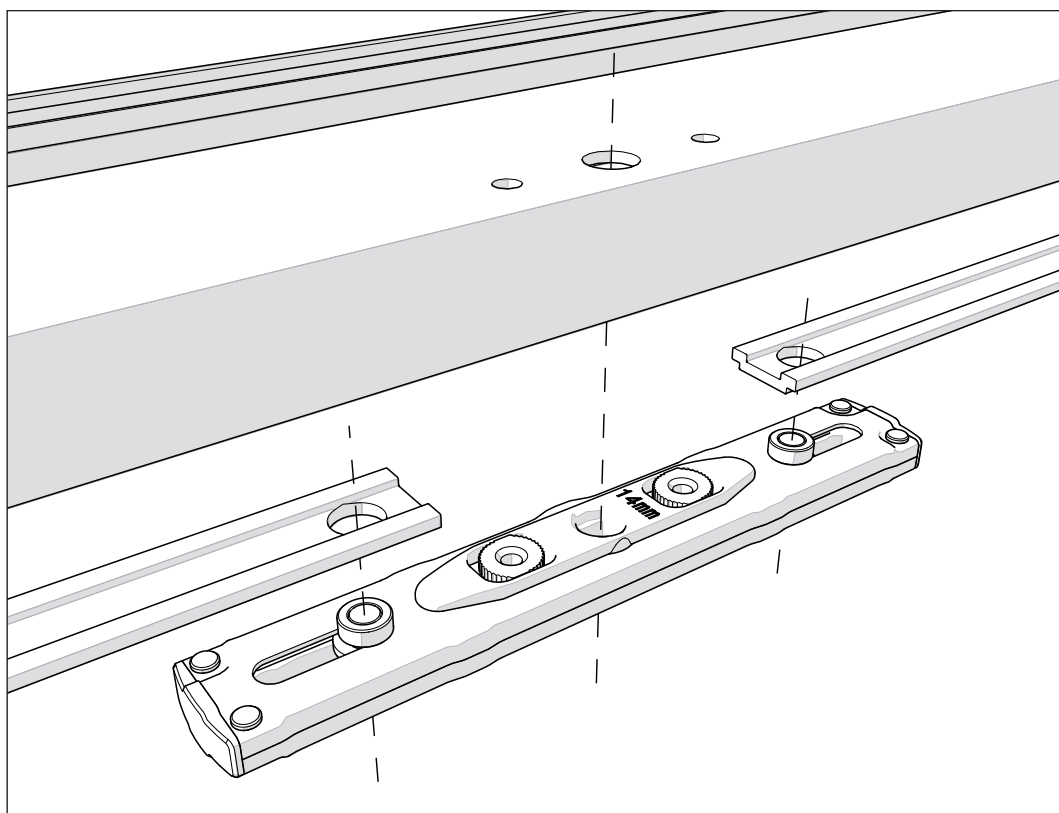
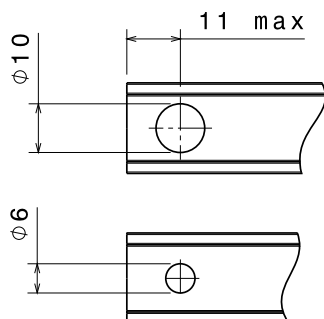


Sterling Window Lock

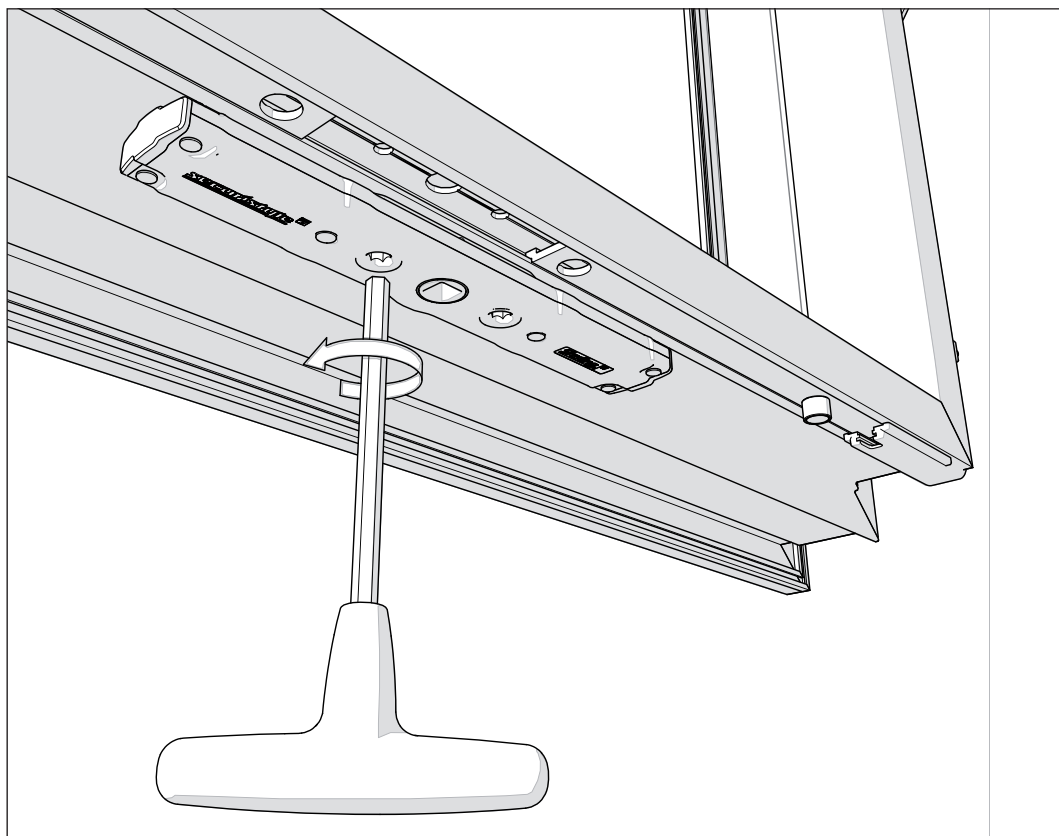
Installation Instructions

Fitting of Gearbox

Gearbox options are available for installation onto drive bars with either 6mm or 10mm holes. Ensuring the drive bars are in the correct position inside the profile, push the Sterling lock onto the Euro-groove and align screw holes with pre-prepared profile. Using a 5mm hexagon key, rotate cams counter clockwise to secure the gearbox to the profile.



Align fitting holes with profile preparation. Note position of drive spigots to locate with drive bars. Hexagon clamping cams must be rotated in a counter clockwise direction to fasten to profile.

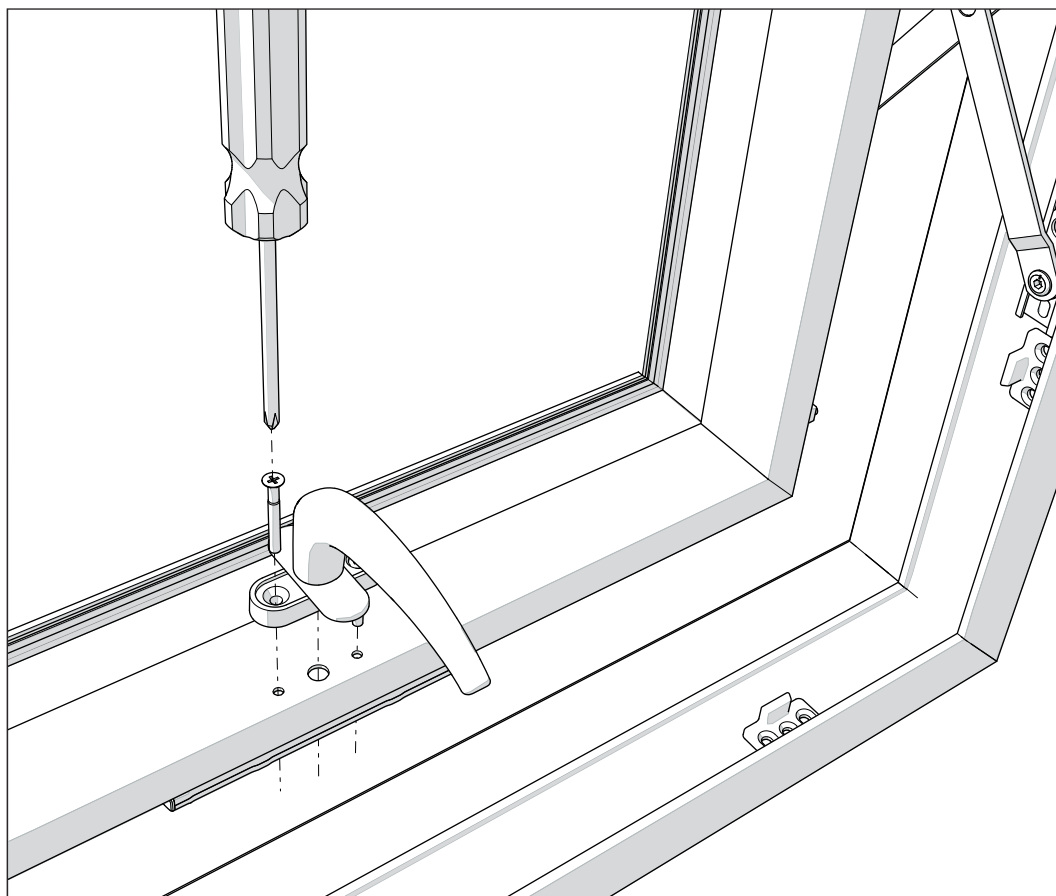


Sterling Window Lock

Installation Instructions

Fitting of Gearbox

Fit handle with M5 screws ensuring the ends do not penetrate beyond gearbox to avoid clashing against the frame, weather seals or other hardware.



Specification

MATERIALS

- Steel Components - 304 and 316 Stainless Steel
- Plastic Components - Acetal
- Lubricant - Lithium based multi-purpose grease

ENVIRONMENTAL CONSTRAINTS

- Normal operating temperature range is -20°C to +60°C.
- Normal operating humidity range is 10% RH to 95% RH.
- Materials used will not degrade, due to ultra violet light or when using neutral acidity non solvent cleaning chemicals, at a rate faster than other parts of the window assembly.

MAINTENANCE

- Lubricated for the life of the product.
- Following installation and prior to initial operation ensure gearbox is clear of any building or fabrication debris.
- Check the tightness of handle/gearbox fixing screws every 12 months.
- May be cleaned using water or a mild detergent on a damp cloth. Do not use acid, alkaline, solvent or abrasive cleaning agents or materials.

TESTING AND ACCREDITATION

- Neutral Salt Spray to BS EN 1670 Class 5.
- Endurance to BS EN 1191 Class 3.
- Securistyle Test Report No. STR274E

COMPATIBLE PRODUCTS

- Sterling Hinges
- Storm Balanced Hinges
- Storm Hinges
- Parallel Plus Hinges
- Rushmore Hinge
- Sterling/Storm Fixed Restrictors
- Stay Open Restrictor
- Detachable Restrictor
- Pull-In Blocks
- Separate Adjuster

DISCLAIMER

It is the responsibility of the user to ensure that this document is at the latest issue. Due to our policy of continual product improvement we reserve the right to alter specifications without notice. It is the responsibility of the window and or door manufacturer to ensure that the finished window and or door meets the required performance and safety specification.