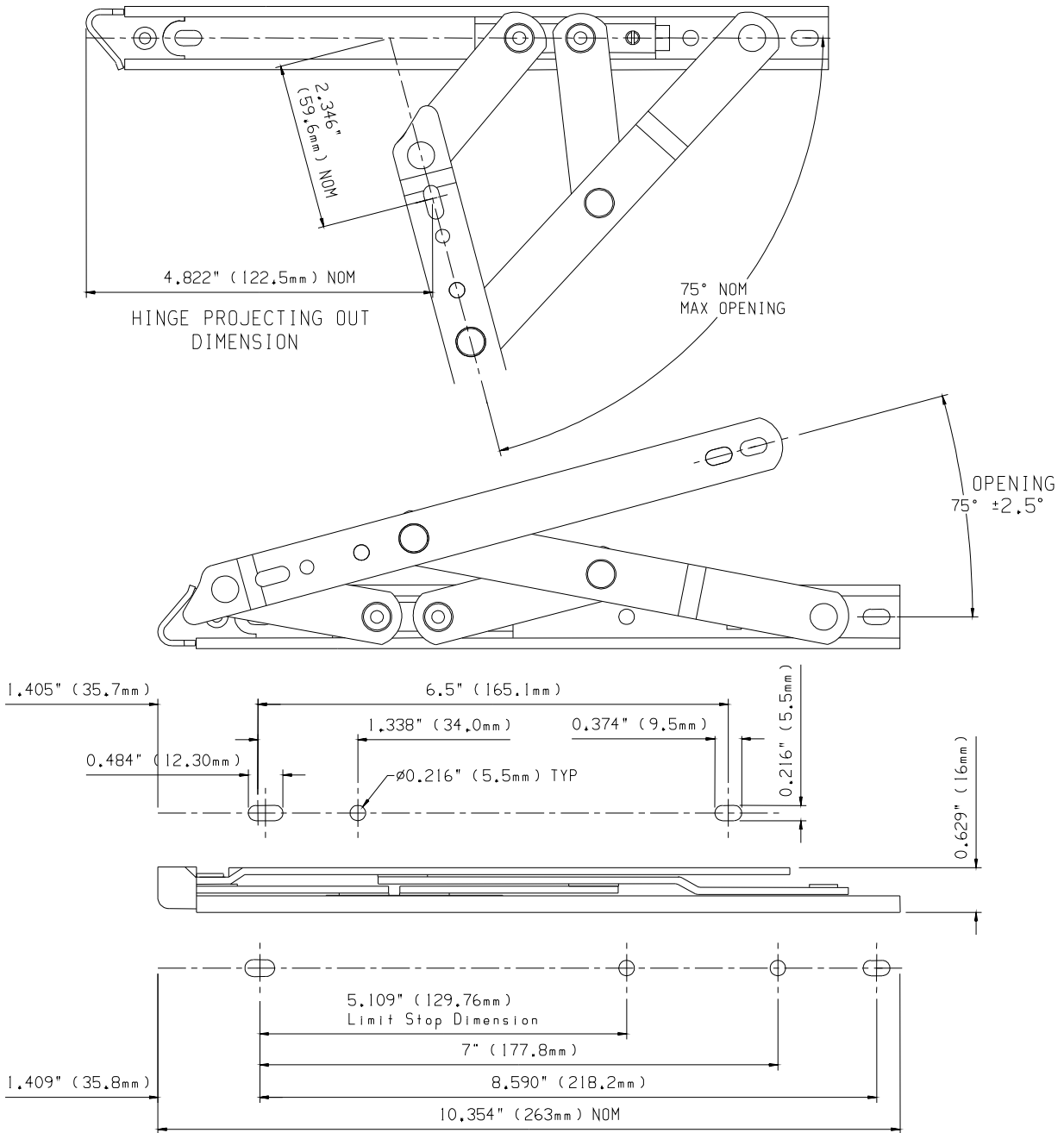


HINGES

ASSEMBLY SHEET - STORM10 Top Hung Hinge



Hinge Code	Max. Vent Weight lb - (Kg)	Min. Vent Height in - (mm)	Max. Vent Height in - (mm)	Max. Vent Width in - (mm)	Hardware Cavity in - (mm)
STORM10 Projecting	110 (50)	11 (280)	30 (762)	See profile manufacturers recommendations	0.629-0.708 (16-18)

Not to Scale, All dimensions in inches & mm

It is the responsibility of the user to ensure that this document is at the latest issue.

Due to our policy of continual product improvement we reserve the right to alter specifications without notice.

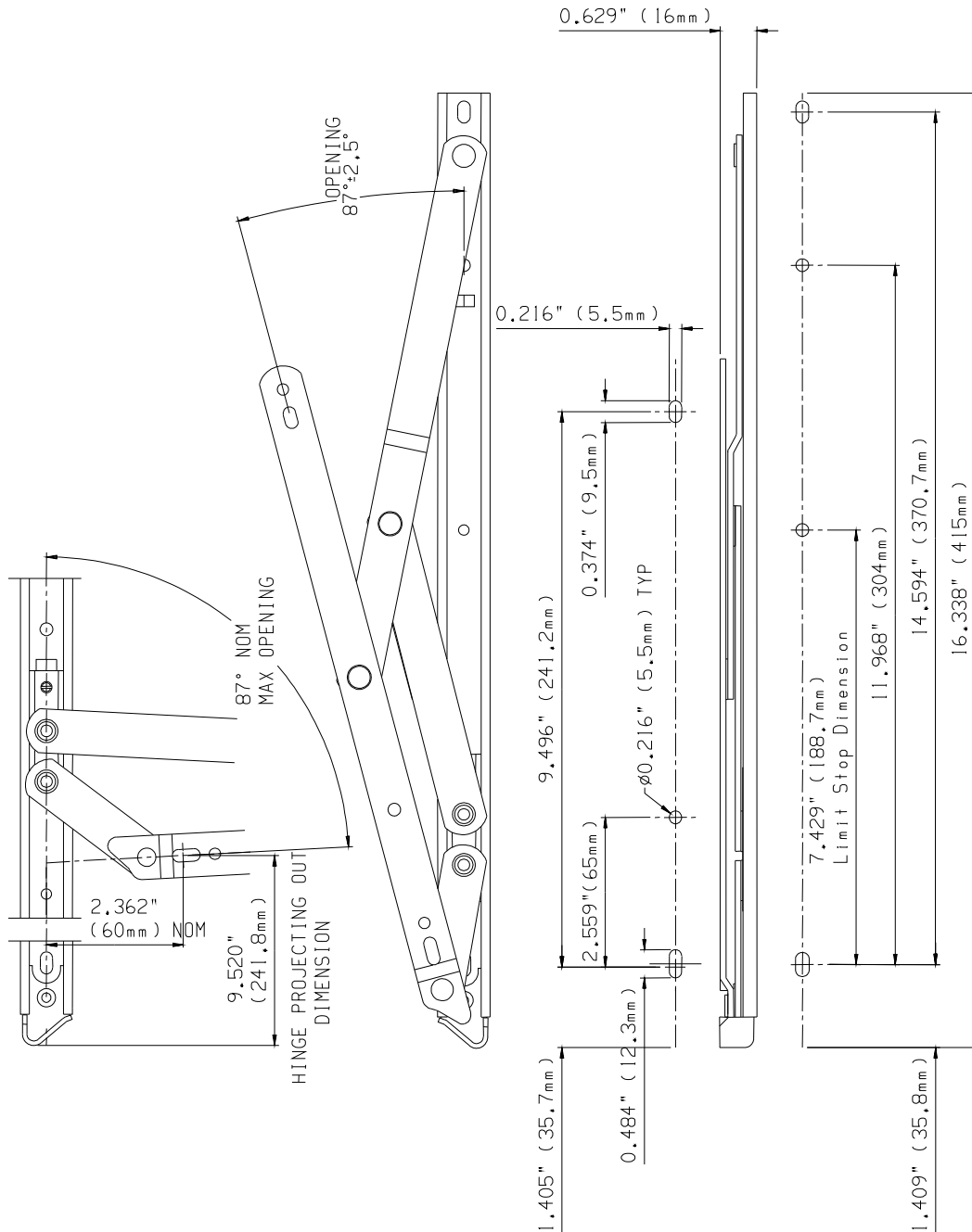
It is the responsibility of the window manufacturer to ensure that the finished window meets the required performance and safety specification.



Securistyle Ltd.
Kingsmead Industrial Estate
Princess Elizabeth Way, Cheltenham,
Gloucestershire, GL51 7RE
Tel: +44 (0) 1242 221200
Fax: +44 (0) 1242 520828
Web: www.securistyle.co.uk

HINGES

ASSEMBLY SHEET - STORM16 Top Hung Hinge



Hinge Code	Max. Vent Weight lb - (Kg)	Min. Vent Height in - (mm)	Max. Vent Height in - (mm)	Max. Vent Width in - (mm)	Hardware Cavity in - (mm)
STORM16 Projecting	138 (63)	18 (457)	44 (1120)	See profile manufacturers recommendations	0.629-0.708 (16-18)

Not to Scale, All dimensions in inches & mm

It is the responsibility of the user to ensure that this document is at the latest issue.

Due to our policy of continual product improvement we reserve the right to alter specifications without notice.

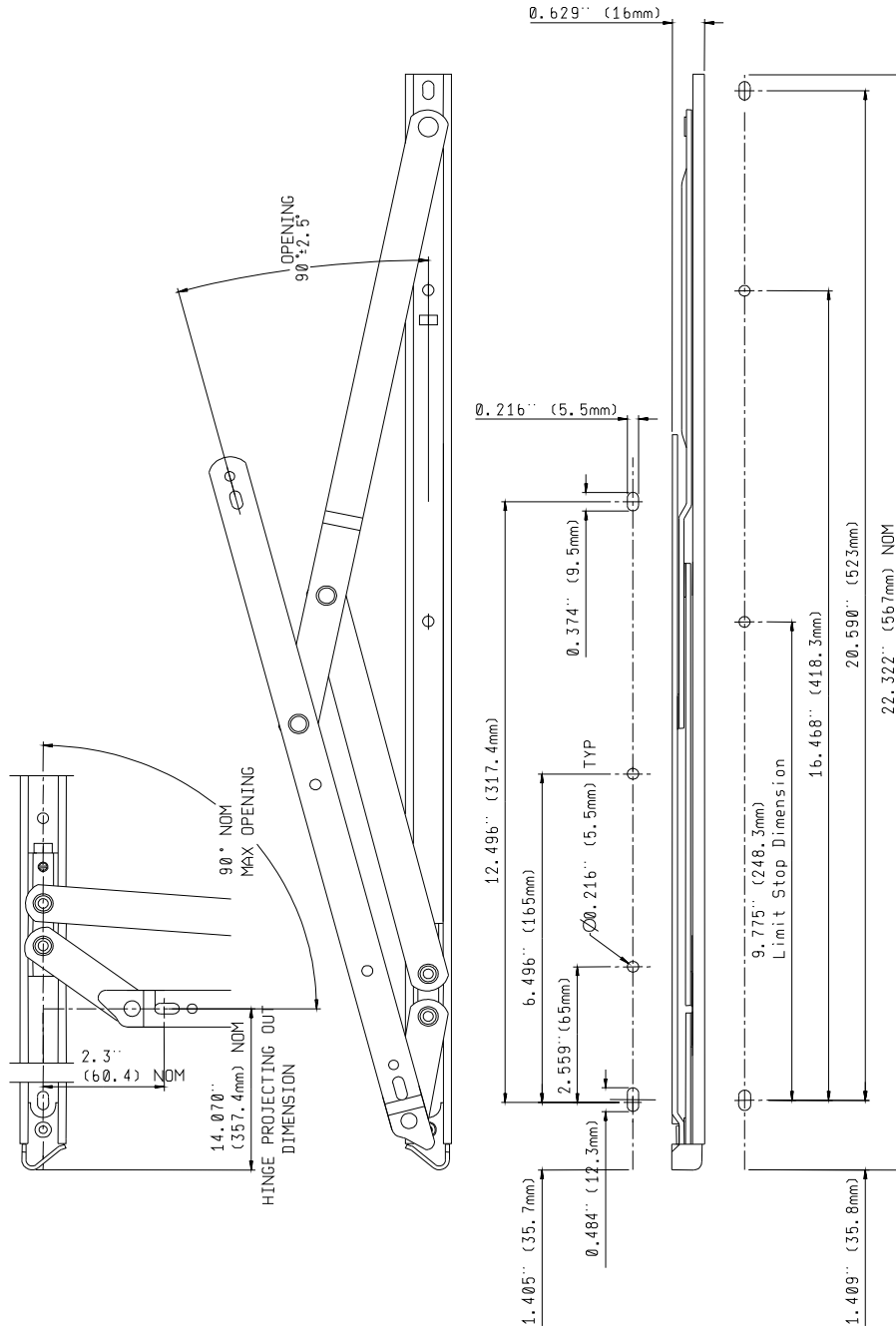
It is the responsibility of the window manufacturer to ensure that the finished window meets the required performance and safety specification.



Securistyle Ltd.
Kingsmead Industrial Estate
Princess Elizabeth Way, Cheltenham,
Gloucestershire, GL51 7RE
Tel: +44 (0) 1242 221200
Fax: +44 (0) 1242 520828
Web: www.securistyle.co.uk

HINGES

ASSEMBLY SHEET - STORM22 Top Hung Hinge



Hinge Code	Max. Vent Weight lb - (Kg)	Min. Vent Height in - (mm)	Max. Vent Height in - (mm)	Max. Vent Width in - (mm)	Hardware Cavity in - (mm)
STORM22 Projecting	165 (75)	24 (610)	52 (1321)	See profile manufacturers recommendations	0.629-0.708 (16-18)

Not to Scale, All dimensions in inches & mm

It is the responsibility of the user to ensure that this document is at the latest issue.

Due to our policy of continual product improvement we reserve the right to alter specifications without notice.

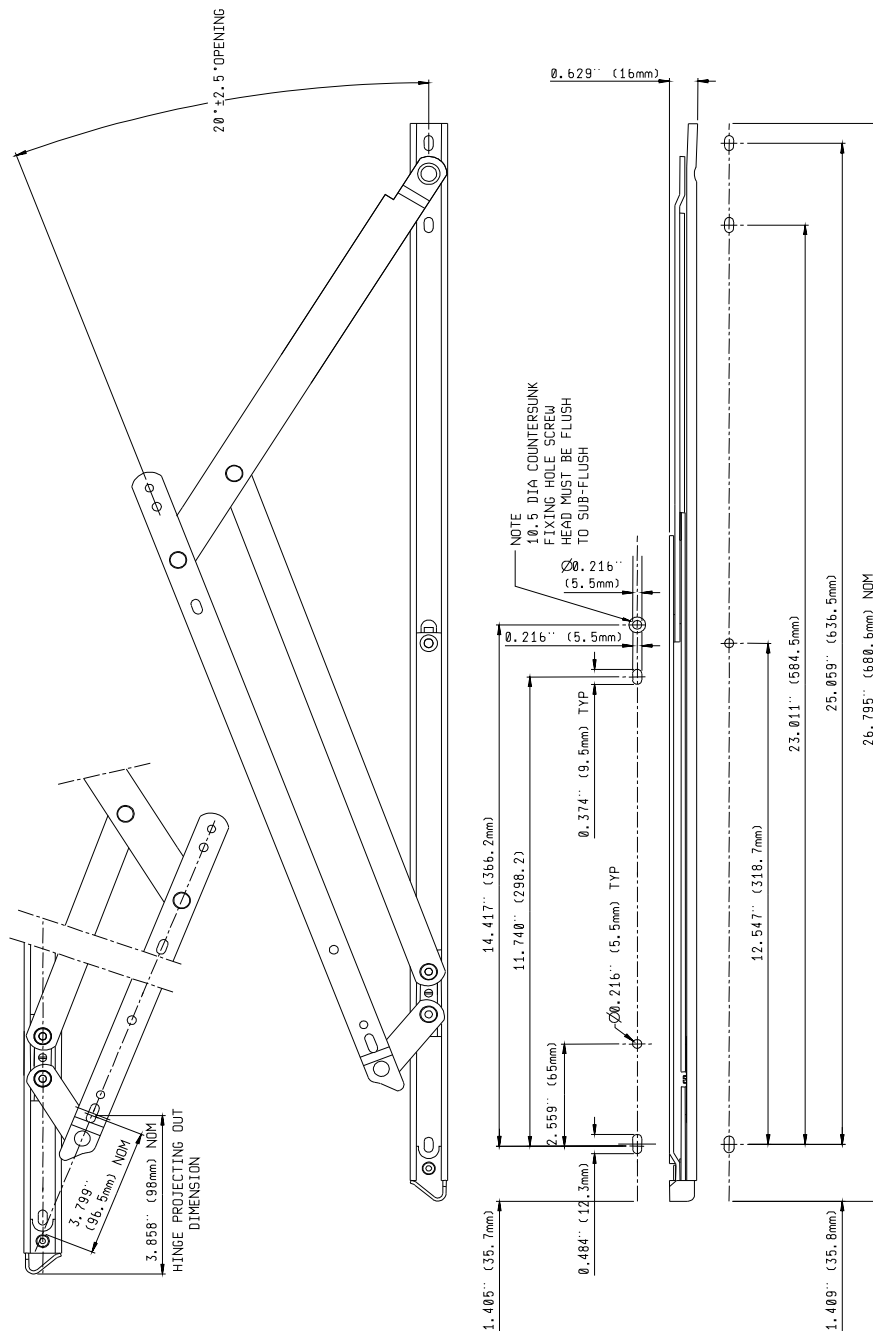
It is the responsibility of the window manufacturer to ensure that the finished window meets the required performance and safety specification.



Securistyle Ltd.
Kingsmead Industrial Estate
Princess Elizabeth Way, Cheltenham,
Gloucestershire, GL51 7RE
Tel: +44 (0) 1242 221200
Fax: +44 (0) 1242 520828
Web: www.securistyle.co.uk

HINGES

ASSEMBLY SHEET - STORM26 Top Hung Hinge



Hinge Code	Max. Vent Weight lb - (Kg)	Min. Vent Height in - (mm)	Max. Vent Height in - (mm)	Max. Vent Width in - (mm)	Hardware Cavity in - (mm)
STORM26 Projecting	265 (120)	50 (1270)	87 (2200)	See profile manufacturers recommendations	0.629-0.708 (16-18)

Not to Scale, All dimensions in inches & mm

It is the responsibility of the user to ensure that this document is at the latest issue.

Due to our policy of continual product improvement we reserve the right to alter specifications without notice.

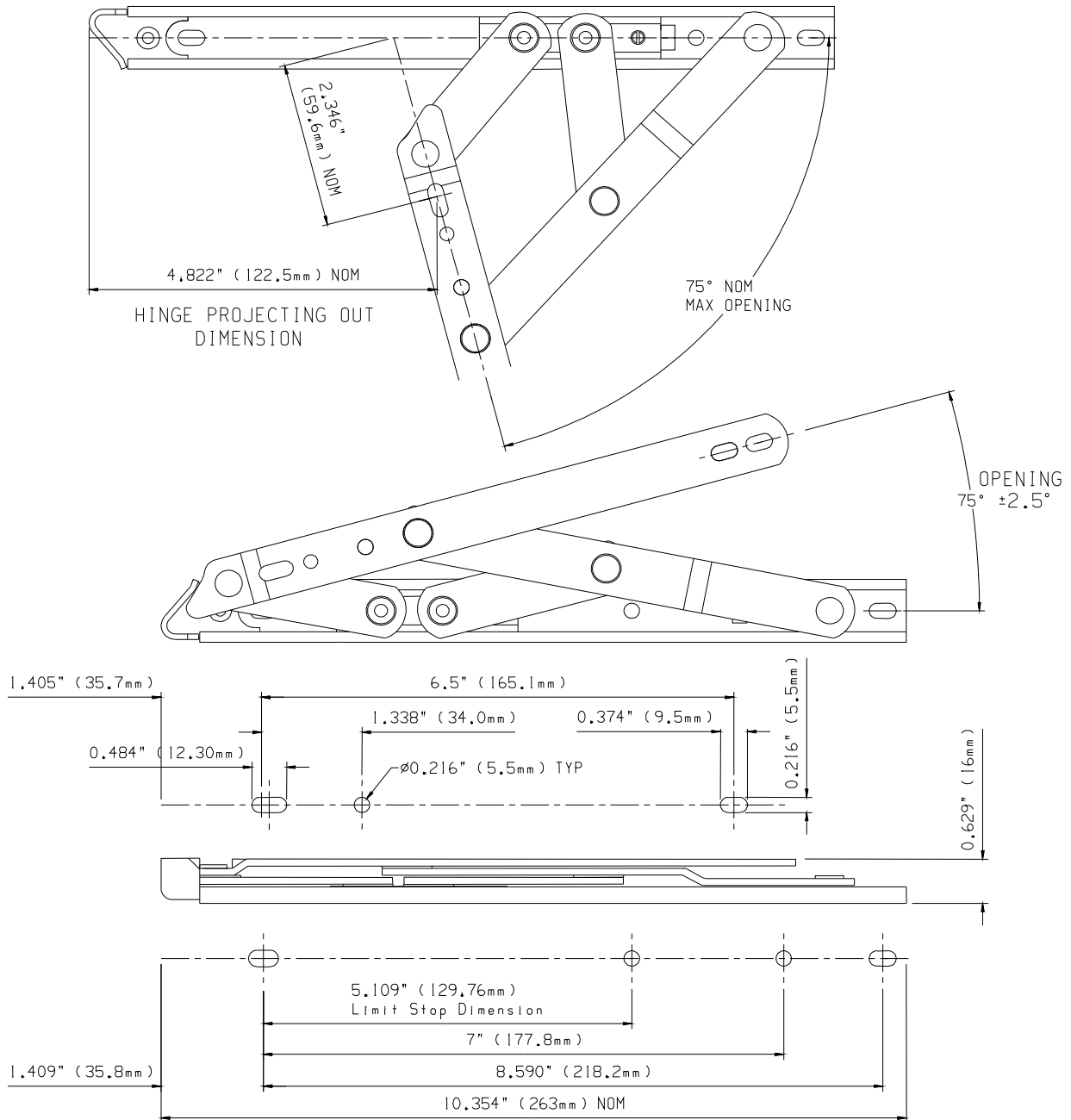
It is the responsibility of the window manufacturer to ensure that the finished window meets the required performance and safety specification.



Securistyle Ltd.
Kingsmead Industrial Estate
Princess Elizabeth Way, Cheltenham,
Gloucestershire, GL51 7RE
Tel: +44 (0) 1242 221200
Fax: +44 (0) 1242 520828
Web: www.securistyle.co.uk

HINGES

ASSEMBLY SHEET - STORM10 Side Hung Hinge



Hinge Code	Max. Vent Weight lb - (Kg)	Min. Vent Width in - (mm)	Max. Vent Width in - (mm)	Max. Vent Height in - (mm)	Hardware Cavity in - (mm)
STORM10 Casement	76 (34.5)	11 (280)	26 (660)	See profile manufacturers recommendations	0.629-0.708 (16-18)

Not to Scale, All dimensions in inches & mm

It is the responsibility of the user to ensure that this document is at the latest issue.

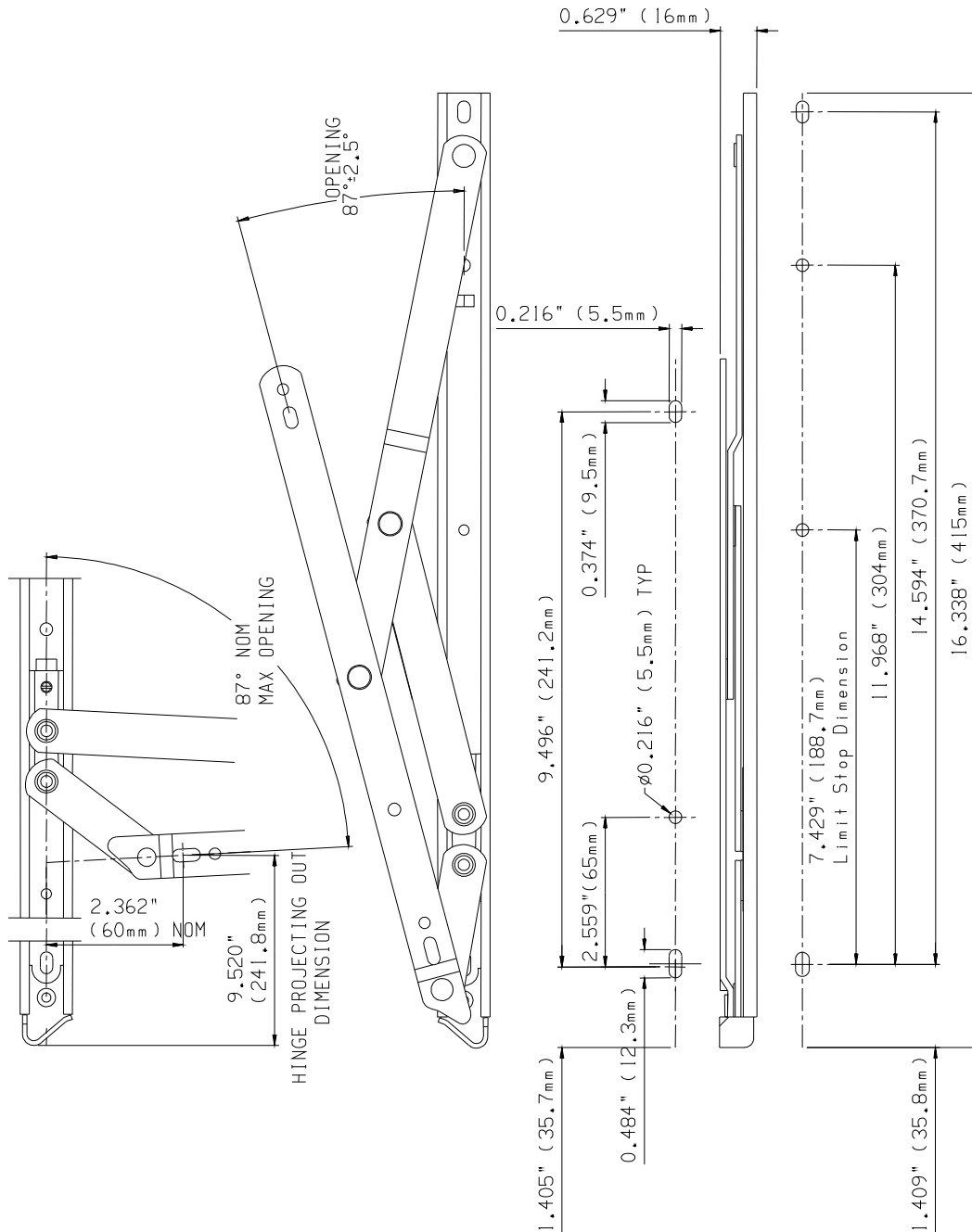
Due to our policy of continual product improvement we reserve the right to alter specifications without notice.

It is the responsibility of the window manufacturer to ensure that the finished window meets the required performance and safety specification.



HINGES

ASSEMBLY SHEET - STORM16 Side Hung Hinge



Hinge Code	Max. Vent Weight lb - (Kg)	Min. Vent Width in - (mm)	Max. Vent Width in - (mm)	Max. Vent Height in - (mm)	Hardware Cavity in - (mm)
STORM16 Casement	103 (47)	18 (457)	33 (838)	See profile manufacturers recommendations	0.629-0.708 (16-18)

Not to Scale, All dimensions in inches & mm

It is the responsibility of the user to ensure that this document is at the latest issue.

Due to our policy of continual product improvement we reserve the right to alter specifications without notice.

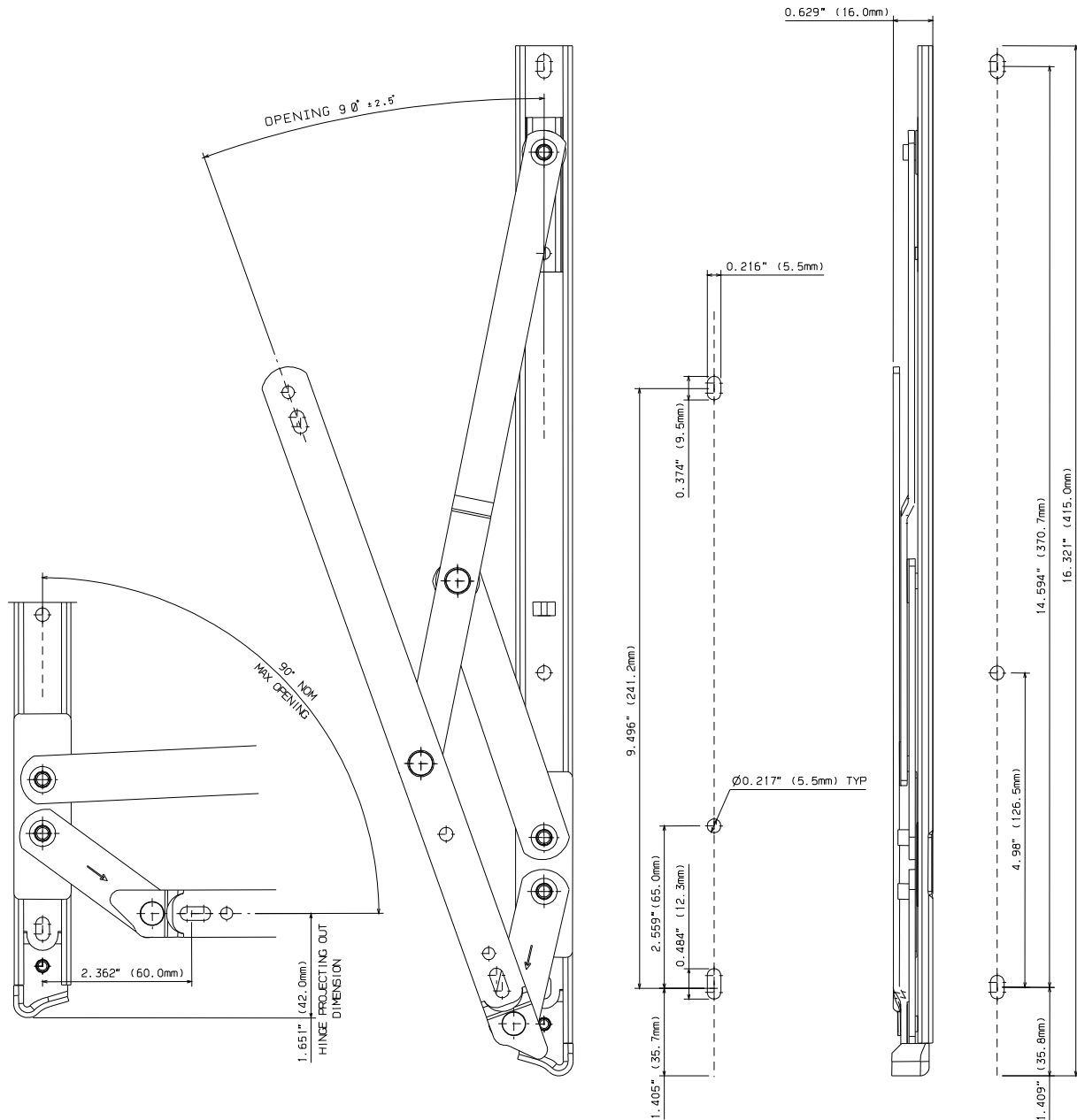
It is the responsibility of the window manufacturer to ensure that the finished window meets the required performance and safety specification.



Securistyle Ltd.
Kingsmead Industrial Estate
Princess Elizabeth Way, Cheltenham,
Gloucestershire, GL51 7RE
Tel: +44 (0) 1242 221200
Fax: +44 (0) 1242 520828
Web: www.securistyle.co.uk

HINGES

ASSEMBLY SHEET - STORME16 Side Hung Hinge



Hinge Code	Max. Vent Weight lb - (Kg)	Min. Vent Width in - (mm)	Max. Vent Width in - (mm)	Max. Vent Height in - (mm)	Hardware Cavity in - (mm)
STORM16 Casement	103 (47)	18 (457)	33 (838)	See profile manufacturers recommendations	0.629-0.708 (16-18)

Not to Scale, All dimensions in inches & mm

It is the responsibility of the user to ensure that this document is at the latest issue.

Due to our policy of continual product improvement we reserve the right to alter specifications without notice.

It is the responsibility of the window manufacturer to ensure that the finished window meets the required performance and safety specification.



Securistyle Ltd.
Kingsmead Industrial Estate
Princess Elizabeth Way, Cheltenham,
Gloucestershire, GL51 7RE
Tel: +44 (0) 1242 221200
Fax: +44 (0) 1242 520828
Web: www.securistyle.co.uk