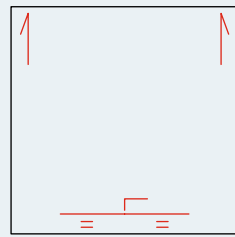
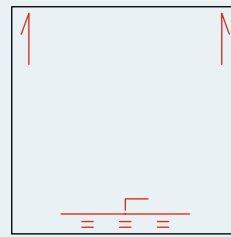


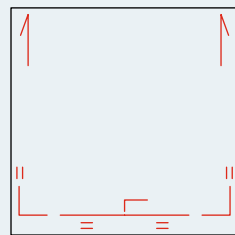
Aluminium casement – Configuration of the casement locking point



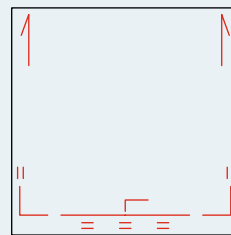
2points locking



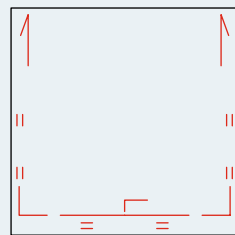
3points locking



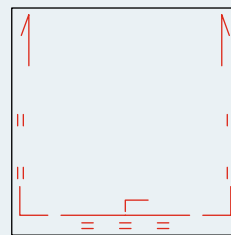
4points locking



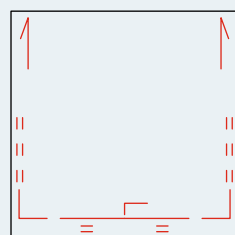
5points locking



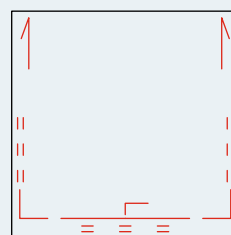
6points locking



7points locking



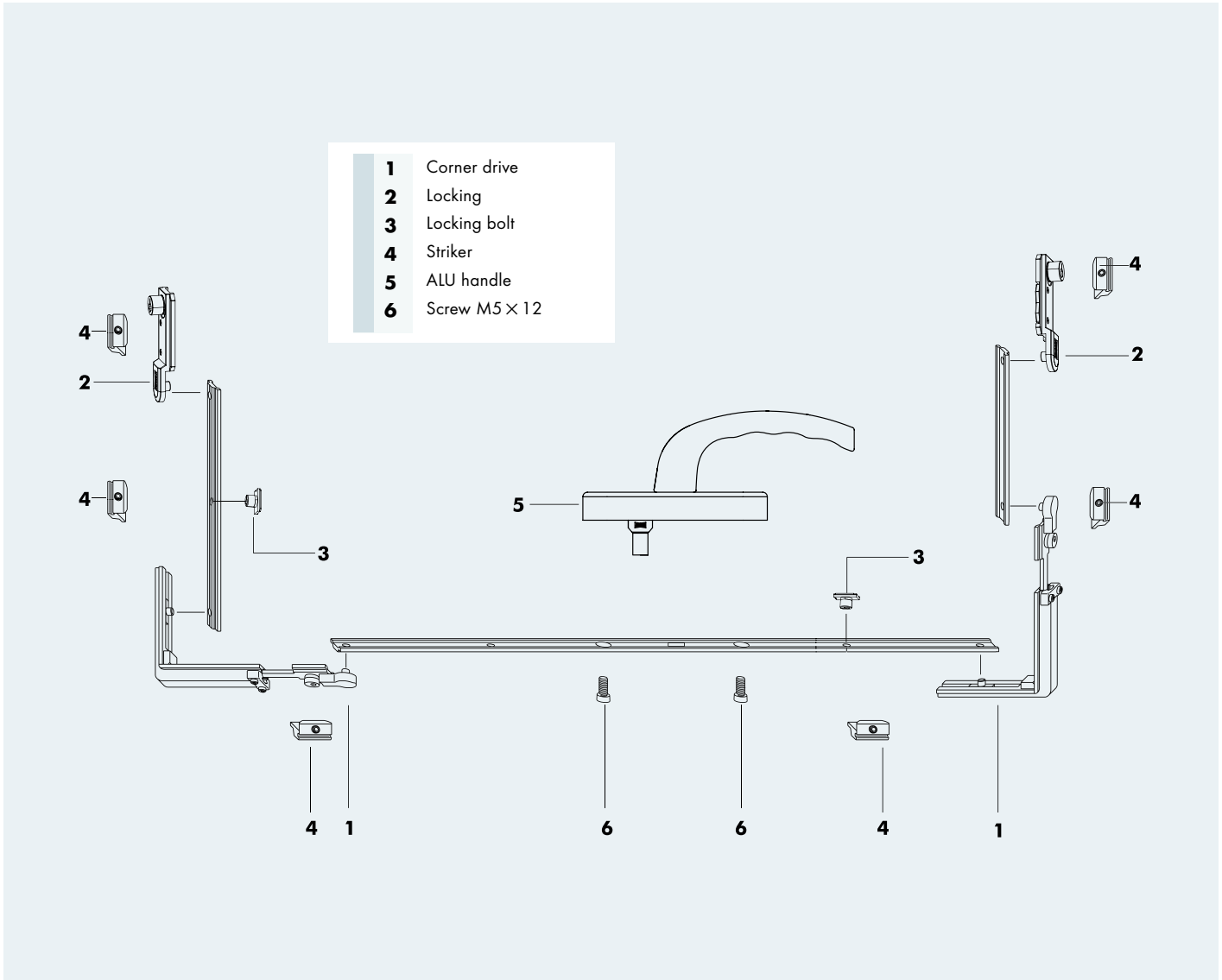
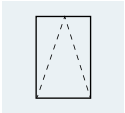
8points locking



9points locking

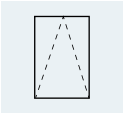
*Note: The tensile strength of the each locking point is 1800N , and the actually project can be calculated as 800N.
In order to strengthen the air tightness and water tightness, it is recommended to set a locking point of 600mm-700mm,
and the distance of the locking edge at the corner should be less than 300mm: the detail number and locking points
need to consider the window size, local wind pressure, floor height and other data.*

Aluminium casement – Curtain wall multi-point locking

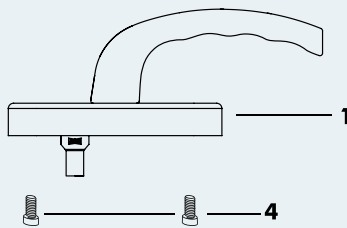


Drawing number	Quantity	Description	Part number	Remark	
1	2	Corner drive	220603	It is common used outward and turn only	
2	2	Locking	MCSB0010-100080		
3	2	Locking bolt	NFZB0040-100200		
4	6	Striker	MCST0010-100080		
5	1	Handle ALU	Silver	MCHS0010-5K7020	
	1		White	MCHS0010-504020	
	1		Brown	MCHS0010-533020	
	1		Black	MCHS0010-523020	
	1		Titan matt dark	MCHS0010-535020	
6	2	Screw M5X12	NDNA0120-000010		

Aluminium casement – Curtain wall opening

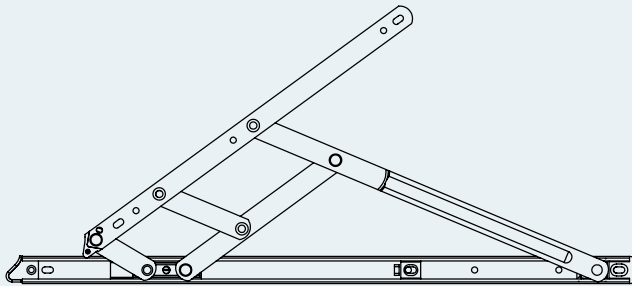
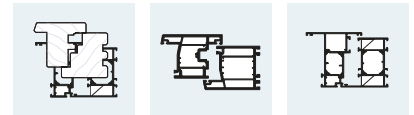


- 1** Handle ALU
- 2** Curtain wall non-groove gear
- 3** Curtain wall pole
- 4** Screw M5 x 12



Drawing number	Quantity	Description	Sash height (mm)	Part number	Remark
1	1	ALU	Silve	MCHS0010-5K7020	
	1		White	MCHS0010-504020	
	1		Black	MCHS0010-533020	
	1		Brown	MCHS0010-523020	
	1		Titan matt dark	MCHS0010-535020	
2	1	Curtain wall non-groove gear GR.400 2MV	420-620	MCSS0170-100060	Application standard
	1	Curtain wall non-groove gear GR.600 2MV	620-820	MCSS0180-100060	
	1	Curtain wall non-groove gear GR.800 2MV	820-1020	MCSS0190-100060	
	1	Curtain wall non-groove gear GR.1000 3MV	1020-1220	MCSS0200-100060	
	1	Curtain wall non-groove gear GR.1200 3MV	1220-1500	MCSS0210-100060	
3	1	Curtain wall pole GR.400 2MV	420-620	MCSS0120-100060	Application standard
	1	Curtain wall pole GR.600 2MV	620-820	MSCC0130-100060	
	1	Curtain wall pole GR.800 2MV	820-1020	MCSS0140-100060	
	1	Curtain wall pole GR.1000 3MV	1020-1220	MCSS0150-100060	
	1	Curtain wall pole GR.1200 3MV	1220-1500	MCSS0160-100060	
4	2	Screw M5 x 12		NDNA0120-000010	

Aluminium casement – Friction hinge

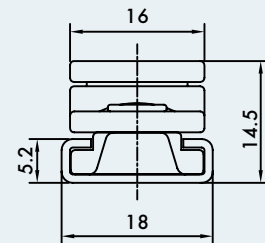


Technical Specification:

1. The main support folding piece of the QPA-08 to QPA-18 is the 2.5mm, the rest folding piece is 2.5mm.
2. The main support folding piece of the QXA-10 to QXA-20 is the 2.5mm, the rest folding piece is the 2.5mm.
3. The quantity of the connecting rod must meet requirements of the following technical table.
4. The left and right structure.

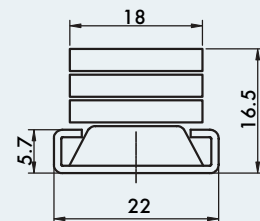
* The diagram is the heavy duty turn only ,the other details please contact the manager of the SIEGENIA.

Light duty turn only friction hinge



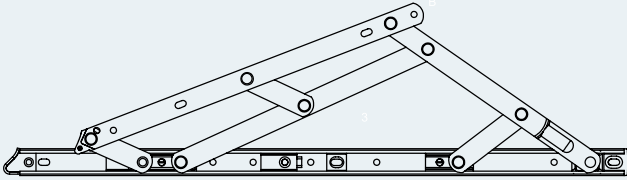
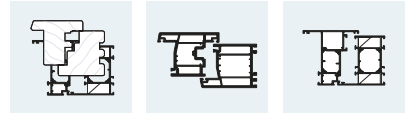
Specification	Max height (mm)	Max width (mm)	Max weight (kg)	Opening angle	Rod number	Part number
QPA-10"	1200	400	13	90°	4	CSHS8500-000111
QPA-12"	1200	570	16	45/90°	4	CSHS8510-000111
QPA-14"	1500	600	19	45/90°	4	CSHS8520-000111
QPA-16"	1500	700	21	45/90°	4	CSHS8530-000111
QPA-18"	1500	750	22	45/90°	4	CSHS8540-000111

Heavy duty turn only friction hinge



Specification	Max height (mm)	Max width (mm)	Max weight (kg)	Opening angle	Rod number	Part number
ZPA-10"	1500	500	23	90°	4	CSHD8500-000110
ZPA-12"	1500	600	28	45/90°	4	CSHD8510-000110
ZPA-14"	1500	700	33	45/90°	4	CSHD8520-000110
ZPA-16"	1800	800	38	45/90°	4	CSHD8530-000110
ZPA-18"	1800	900	43	45/90°	4	CSHD8540-000110
ZPA-20"	1800	1000	45	30/60°	4	CSHD8550-000110
ZPA-24"	1800	1100	50	30/45°	5	CSHD8570-000110

Aluminium casement – Friction hinge

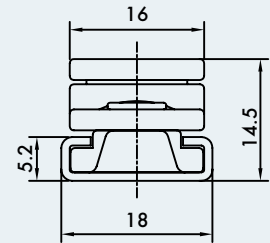


Technical Specification:

1. The main support folding piece of the ZPA-10 to ZPA-24 is the 3.0 mm, the rest folding piece is the 2.5mm.
2. The main support folding piece of the ZPA-10 to ZPA-24 is the 3.0 mm, the rest folding piece is the 2.5mm.
3. The quantity of the connecting rod must meet requirements of the following technical table.
4. The left and right structure.

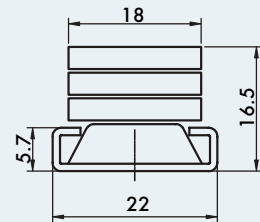
* The diagram is the heavy duty top hung ,the other details please contact the manager of the SIEGENIA.

Light duty top hung friction hinge

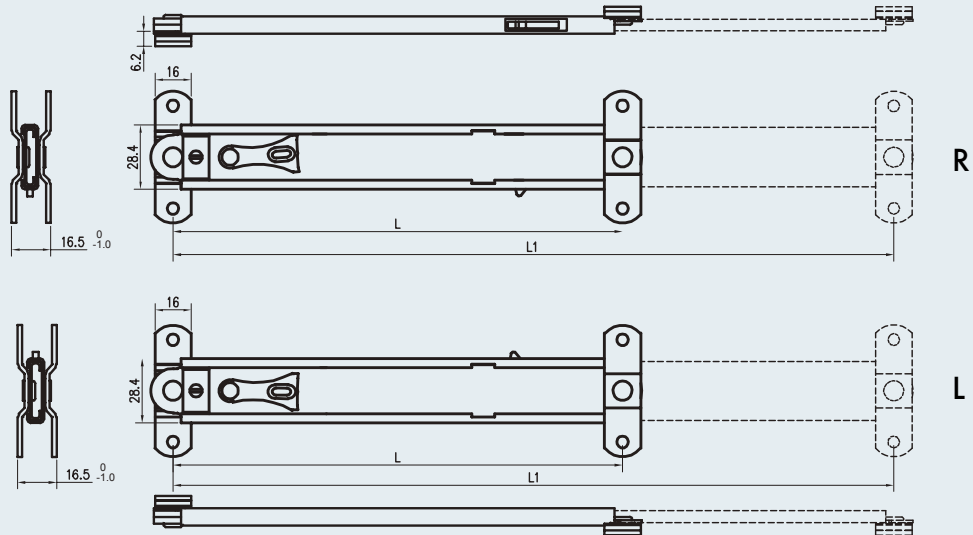
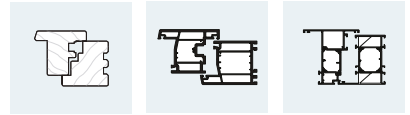


Specification	Max height (mm)	Max width (mm)	Max weight (kg)	Opening angle	Rod number	Part number
QPA-10"	600	1200	21	40°	4	CSHS8550-000111
QPA-12"	1200	1200	28	35/30°	4	CSHS8560-000111
QPA-14"	1200	1300	33	35/30°	4	CSHS8570-000111
QPA-16"	1200	1400	38	30/25°	5	CSHS8580-000111
QPA-18"	1200	1500	42	30/25°	6	CSHS8590-000111
QPA-20"	1200	1600	45	30/25°	6	CSHS8600-000111

Heavy duty top hung friction hinge



Specification	Max height (mm)	Max width (mm)	Max weight (kg)	Opening angle	Rod number	Part number
ZPA-10"	650	1100	43	35°	4	CSHD8580-000110
ZPA-12"	800	1200	60	30/35°	4	CSHD8590-000110
ZPA-14"	1000	1300	68	30/35°	4	CSHD8600-000110
ZPA-16"	1200	1400	85	25/30°	4	CSHD8610-000110
ZPA-18"	1300	1400	95	25/30°	4	CSHD8620-000110
ZPA-20"	1600	1500	108	20/25°	6	CSHD8630-000110
ZPA-24"	1800	1600	125	20/25°	6	CSHD8650-000110



Light duty stop stay

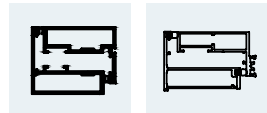
Specification	Contraction length L (mm)	Extension length L1 (mm)	Part number
ES01-06"	154.5	203.5	CASA8000-000050
ES01-08"	203.5	301.5	CASA8010-000050
ES01-10"	254.5	403.5	CASA8020-000050

Heavy duty stop stay

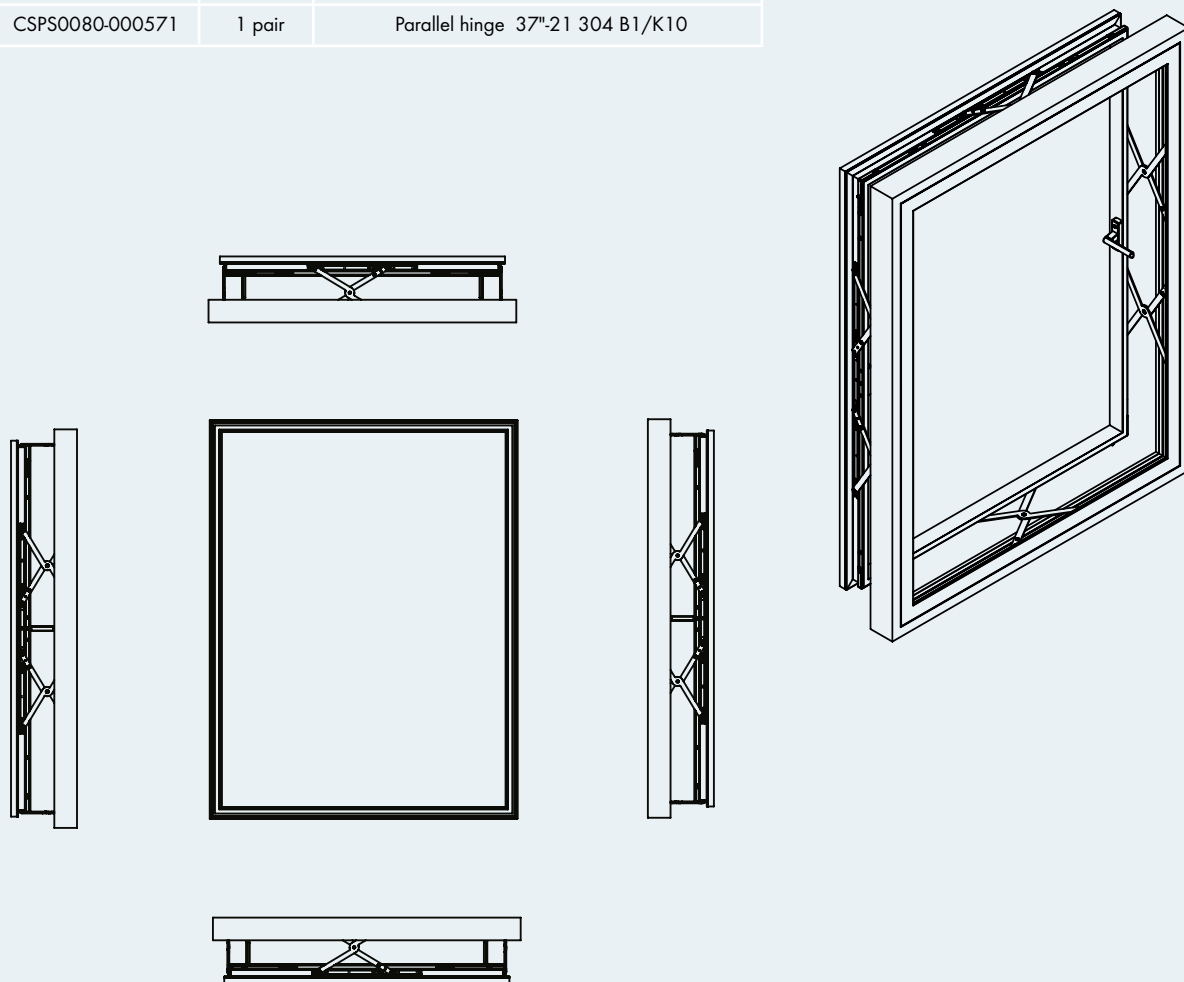
Specification	Contraction length L (mm)	Extension length L1 (mm)	Part number
LMCA-SPHE06"	154.5	203.5	NSFP0140-000010
LMCA-SPHE08"	203.5	301.5	NSFP0150-000010
LMCA-SPHE10"	254.5	403.5	NSFP0160-000010

- 1) The extension sheet of the light duty stop stay is 1 mm thick, and the heavy duty stop stay is 1.5 mm thick. The stack height and thicknesses are all 16.5 mm.
 Die Stützarme bei Rastschere Standard sind jeweils 1 mm dick, bei Rastschere Heavy-Duty hingegen 1,5 mm dick.
 Die Stapelhöhe bei den Beiden ist gleich 16,5 mm.

Aluminium casement – Parallel hinge



Part number	Quantity	Description
CSPS0060-000021	1 pair	Parallel hinge 18"-21 304 B1/K10
CSPS0080-000571	1 pair	Parallel hinge 37"-21 304 B1/K10



Configuration combinations

Left/right sides	Description	Quantity	Top/bottom sides	Description	Quantity	Bearing (kg)	Recommended min Width*Height (mm)	Recommended max Width*Height (mm)
CSPS0060-000021	Parallel hinge 18"-21 304 B1/K10	1	CSPS0060-000021	Parallel hinge 18"-21 304 B1/K10	1	100	490*660	970*970
CSPS0060-000021	Parallel hinge 18"-21 304 B1/K10	1	CSPS0080-000571	Parallel hinge 37"-21 304 B1/K10	1	100	930*660	1600*970
CSPS0080-000571	Parallel hinge 37"-21 304 B1/K10	1	CSPS0060-000021	Parallel hinge 18"-21 304 B1/K10	1	180	490*1100	970*2000
CSPS0080-000571	Parallel hinge 37"-21 304 B1/K10	1	CSPS0080-000571	Parallel hinge 37"-21 304 B1/K10	1	180	930*1100	1600*2000
CSPS0080-000571	Parallel hinge 37"-21 304 B1/K10	2	CSPS0060-000021	Parallel hinge 18"-21 304 B1/K10	1	180	490*2000	970*3000
CSPS0080-000571	Parallel hinge 37"-21 304 B1/K10	2	CSPS0080-000571	Parallel hinge 37"-21 304 B1/K10	1	180	930*2000	1600*3000